

# Knowing the Truth Can Save Your Life



## MESSAGE FROM GENERAL MANAGER AND CHIEF EXECUTIVE OFFICER DARRYL SCHRIVER

**ELECTRICITY IS A WONDERFUL PRODUCT THAT MOST OF US** couldn't dream of doing without. It is the hardest-working, cleanest and safest form of energy available.

But keeping electricity safe requires knowledge—knowing when electricity is safe and when it isn't. Here's a guide.

**FICTION: It is safe to work on a machine or appliance if it is turned off.**

**FACT:** Power to the appliance should be disconnected completely—by unplugging it or turning off the circuit breaker—before any maintenance or repair is done.

**FICTION: Low-voltage current, used in homes, cannot hurt me.**

**FACT:** Low voltage can kill you. Normal household current has many times the minimum amperage necessary to halt the function of your heart and lungs.

**FICTION: A power line on the ground is dead if it isn't moving, sparking or popping.**

**FACT:** Never be fooled by appearances. Many times, wires may give every indication of being dead when the opposite is true. Do not try to move any wire using rope or wood—or anything else. Stay at least 35 feet away and notify your electric cooperative immediately. 8001622103

**FICTION: All power lines are insulated.**

**FACT:** The majority of power lines are NOT insulated, and those that are insulated may have degraded due to weather and other factors. Assume that no power line is safe to go near.

**FICTION: If a fuse continues to blow, maybe I just need a larger one.**

**FACT:** If a fuse is blowing repeatedly (or a circuit breaker keeps tripping), the circuit should be checked by an electrician. Replacing a fuse with one of a higher amperage could result in a fire.

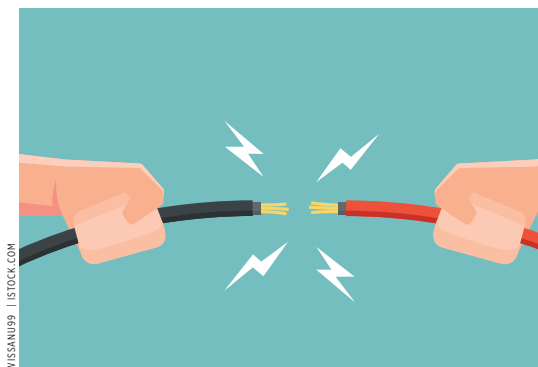
**FICTION: I can work around electricity safely if I wear rubber boots.**

**FACT:** Common rubber boots offer almost no protection at all. Most rubber boots contain lampblack, which conducts electricity.

**FICTION: Wood is an insulator, and wooden ladders cannot conduct electricity.**

**FACT:** Wood is a poor conductor, but it can conduct electricity, especially when wet or when it has metal attachments. Using a wooden ladder when working with live electrical wiring is not a guarantee of safety.

The folks at your electric cooperative know the facts—and the fiction—about electric safety and want you to know, too.



WISSANU99 | ISTOCK.COM



NRECA

## Memorabilia and Memories Wanted

**2019 MARKS THE 80TH YEAR OF TRI-**County Electric Cooperative serving our members and communities!

If you or your family have any historical photos, newspaper articles, member bulletins or other memorabilia associated with Tri-County EC that you would like to share, please contact Annie McGinnis at (817) 752-8116 or [amcginnis@tcectexas.com](mailto:amcginnis@tcectexas.com).

Do you have stories from over the years about Tri-County EC? If so, let us know! We would love to hear from you. 800818412



# Mark Your Calendar for Savings

*Take advantage of the Memorial Day weekend tax-free holiday*

## IF YOU'RE LOOKING TO MAKE SOME ENERGY-EFFICIENT OR WATER-CONSCIOUS

upgrades to your home, this is a great month to take the plunge. Texas holds its co-occurring Energy Star and water-efficient products sales tax holidays annually over Memorial Day weekend. This year, the sales tax reprieve will be in effect from Saturday, May 25, through midnight Monday, May 27. There's no limit on the number of qualifying items you can buy, and no exemption certificate is required to buy items tax-free. 800853124

Any product that displays a WaterSense label is eligible to be purchased free of sales tax, whether its planned use is for personal or business purposes. Labeled items include faucets, showerheads and toilets. Certain other water-conserving products are also tax-free during the holiday weekend but only when bought for use at your residential property. These items include soaker and drip-irrigation hoses, moisture controls for sprinkler and irrigation systems, mulch, rain barrels, plants, soil and compost.

The Energy Star-labeled products that qualify for tax exemption include air conditioners (priced \$6,000 or less), refrigerators (priced \$2,000 or less), ceiling fans, lightbulbs, clothes washers, dishwashers and dehumidifiers.

Bear in mind that some Energy Star-labeled products do not qualify and are still taxable during the holiday, including water heaters, clothes dryers, freezers and stoves. Also, be aware that air conditioners and refrigerators purchased for prices higher than the allowable amounts will be taxed in full. The same caveat applies to delivery charges that increase an item's total price beyond the cap. For example, if an Energy Star refrigerator costs \$1,995 but has a \$50 delivery charge, tax will be due on the total \$2,045 amount.

For more information on how to take advantage of this year's tax holiday, visit [comptroller.texas.gov](http://comptroller.texas.gov).



HYUNAH KANG | ISTOCK.COM

## HAPPY MEMORIAL DAY!

Tri-County Electric Cooperative  
will be closed Monday, May 27,  
in observance of the holiday.



CRISTIAN LAZZARI | ISTOCK.COM

## HAPPY CINCO DE MAYO!

Sunday, May 5



# Barn Safety Checklist

**MRS. O'LEARY'S COW MAY HAVE A BAD RAP, BUT THE FOLK TALE REMINDS US THAT FIRE** safety is an important part of farm life. People, animals and property are in danger when fire breaks out on the farm. Inspect your barn and outbuildings for fire hazards to reduce the risk of tragic loss.

**For a safe barn, ensure that:**

- ▶ All electrical wiring is free from damage and enclosed in metal or PVC conduit.
- ▶ Electrical equipment is designated for agricultural or commercial use.
- ▶ Extension cords are not used in the barn.
- ▶ Lightbulbs have covers to protect them from dust, moisture and breakage.
- ▶ Damage is identified quickly and repairs are completed with safety in mind.
- ▶ Electrical outlets and lights are kept free of dust and cobwebs.
- ▶ Oily rags are stored in a closed metal container away from heat.
- ▶ Feed, hay, straw and flammable liquids are stored away from the main barn.
- ▶ The barn is a smoke-free zone.
- ▶ A qualified electrician routinely (at least annually) inspects any electrical appliances installed in the barn, such as water heaters and portable heating units.
- ▶ Radios, clippers, extension cords and similar portable electrical appliances are unplugged and stored when not in use. 800675704
- ▶ Regular maintenance is performed on gasoline- and diesel-powered vehicles to avoid any problems with fuel or exhaust systems.
- ▶ Heat lamps and space heaters are kept a safe distance from anything that can burn and are on a sturdy surface where they cannot fall over.
- ▶ Exits are clearly marked and pathways are clear.
- ▶ Workers are trained to use fire extinguishers, and everyone in the barn knows personal safety is the first priority if a fire breaks out.
- ▶ Hazard checks take place on a set schedule.
- ▶ This safety equipment—which may be required by building codes—is in place: ABC-type fire extinguishers near every exit and within 50 feet of any point in the barn, a fire alarm, fire sprinkler system and carbon monoxide detectors.



CASTENOID | ISTOCK.COM

## RECIPE OF THE MONTH



BHOFAK2 | ISTOCK.COM

## Worm Dirt Pudding

- 2 packages (8 ounces each) cream cheese, softened
- 2 cups powdered sugar
- 1 tub (16 ounces) nondairy whipped topping
- 2 boxes (4 ounces each) instant chocolate pudding
- 4 cups milk
- 1 package (20 ounces) chocolate sandwich cookies, crushed
- 1 package gummy worms

1. Mix together cream cheese, powdered sugar and whipped topping.
2. Prepare pudding with milk. When thick, fold pudding into cream cheese mixture.
3. Layer in serving dish(es) with crushed cookies.
4. Top with final layer of crushed cookies, then poke gummy worms through surface.

Find this and more delicious recipes online at  
**TEXASCOOPPOWER.COM**

# ELECTRICITY PUTS BREAD ON YOUR TABLE. AND KEEPS IT IN YOUR WALLET.

## LOAF OF BREAD

1936.....8¢  
2013.....\$1.41  
INCREASE.....18X

## ELECTRICITY

1936.....5¢  
2013.....11¢  
INCREASE.....2X

BASED ON AVERAGE COST PER  
KILOWATT HOUR



Affordable, reliable electricity. It's the best thing since...well, since we first supplied it over 75 years ago. We've been feeding you both ever since. Learn more about the power of your co-op membership at [TogetherWeSave.com](http://TogetherWeSave.com).



[TOGETHERWESAVE.COM](http://TOGETHERWESAVE.COM)

## Tri-County Electric Cooperative

600 NW Parkway, Azle 76020

### BOARD OF DIRECTORS

Jorden Wood, President  
Dr. Jarrett Armstrong, Vice President  
Todd Smith, Secretary-Treasurer  
Jerry A. Walden  
Steve V. Harris  
John Killough  
Max Waddell  
Larry Miller

### GENERAL MANAGER/CEO

Darryl Schriver

## Contact Us

### CALL US

(817) 444-3201

### FIND US ON THE WEB

[tcectexas.com](http://tcectexas.com)

### EMAIL US

[pr@tcectexas.com](mailto:pr@tcectexas.com)

### COOPERATIVE OFFICES

#### Azle—Headquarters

600 NW Parkway, Azle, TX 76020  
(817) 444-3201

#### Granbury Office

1623 Weatherford Highway, Granbury 76048  
(817) 279-7010

#### Keller Office

4900 Keller Hicks Road, Fort Worth 76244  
(817) 431-1541

#### Seymour Office

419 N. Main, Seymour 76380  
(940) 888-3441

### IT PAYS TO STAY INFORMED!

Find your account number in pages 18–25 of *Texas Co-op Power*, and you will receive a \$20 credit on your TCEC electric bill. Simply contact one of the offices listed above and make them aware of your discovery!



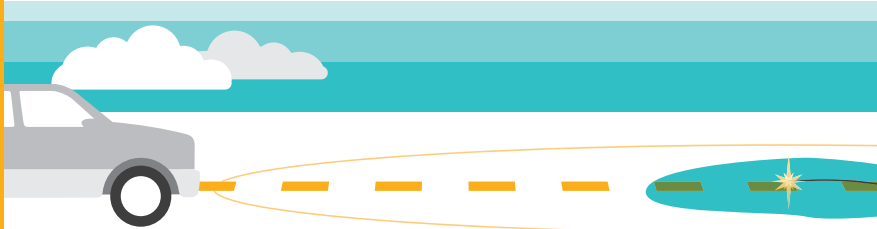
Find us on  
**Facebook**

# Downed and Dangerous

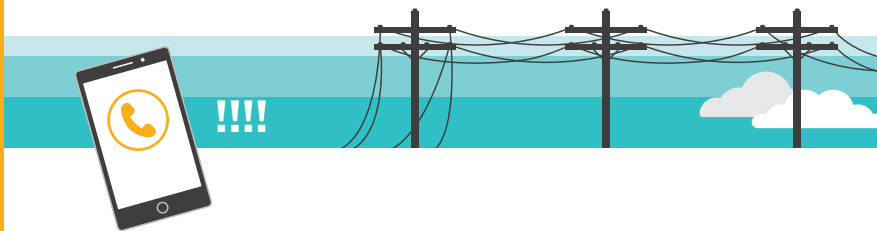
If you see a downed power line, always assume it is energized and dangerous. Avoid going near it or anything in contact with the line.



Downed power lines can energize the ground up to **35 feet** away—so keep your distance.



Never drive over a downed line or through water that is touching the line.



If you see a downed line, notify local authorities immediately.



Never try to move a downed power line, even if you think the line is de-energized or if you think you're using nonconductive protection—this cannot prevent injury or death.



ROTTADANA | ISTOCK.COM

## Did You Know?

Hybrid electric cars currently account for only 1 percent of the global fleet, but that number is expected to reach 35 percent by 2040.



ANNA BIZO | ISTOCK.COM

## Power Tip

Keep it cool for free. Open your windows in the evening to flood indoor space with cooler air, then close them in the morning before the day heats up.

ESF.ORG

# The Ins and Outs of Outlets

**WHEN IT COMES TO SELECTING ELECTRICAL OUTLETS, THERE ARE** a lot of options to consider. This guide provides an overview of the common types of outlets and the level of safety protection they bring to a home.

## Two-Pronged Receptacles

These once-common household outlets provide electricity to appliances and other devices, but most were installed prior to 1962 and are no longer recommended.

## Grounded Receptacles

Three-pronged outlets are grounded, which reduces the risk of electric shock and protects equipment from electrical damage. These are mandated by the National Electrical Code in all areas unless otherwise specified.

## Tamper-Resistant Receptacles

A built-in shutter system prevents objects from being inserted into tamper-resistant outlets, except when simultaneous, equal pressure to both slots is provided by a plug. These are recommended when upgrading receptacles and in areas where children could access the outlets.

## Arc-Fault Circuit Interrupters

Arc-fault circuit interrupters reduce the risk of fire by interrupting power when an arc fault occurs anywhere in the cir-

cuit, including within items plugged into it. These provide protection from faults beyond branch circuit wiring—extending to appliances and cords using the receptacle.

## Ground-Fault Circuit Interrupters

Common nowadays, ground-fault circuit interrupters provide protection against shock that could arise from faults within household circuits. These are must-haves in areas where water and electricity are in close proximity, such as in bathrooms, garages, kitchens, laundry areas and any receptacles located outdoors. 800679204

## Surge Suppression Receptacles

These outlets protect sensitive electronic equipment from transient surges. They're not required by the NEC but are often installed in rooms containing costly electrical equipment such as computers, TVs or refrigerators.

## USB Receptacles

These modern outlets provide a permanent Universal Serial Bus, or USB, connection source for charging devices such as cellphones or tablets.

If you're going to make upgrades, know that some receptacles may combine more than one technology, such as GFCI/TRR and GFCI/USB outlets—but remember, all outlet installations should be performed by a qualified electrician.

**Ground-fault circuit interrupters provide protection against shock that could arise from faults within household circuits.**





# Use Caution Near Co-op Equipment

**AS YOU FIND YOURSELF SPENDING MORE TIME OUTDOORS THIS SUMMER, EXERCISE** caution near power lines and other electrical equipment maintained by Tri-County Electric Cooperative.

Substations and power lines carry extremely high voltage, and if contact is accidentally made, the results can be dangerous—or even deadly.

Never climb trees near power lines. If you make contact with a tree that is touching a power line, your body could become a path for electricity, from the line to the ground. If you encounter an animal trapped in a tree near power lines or inside a substation, do not attempt to remove it—no matter how furry and cute! Call Tri-County EC for assistance.

If there are underground lines in your area, you'll notice big green boxes on the ground that hold our equipment. It's important that landscaping and other barriers be kept clear of these padmount transformers. Co-op technicians need at least 10 feet of clearance around the equipment to be able to safely access them when needed.

Padmount transformers are connected to primary high-voltage lines, and secondary lines can extend underground in several directions to distribute power to homes and businesses. That's why it's important to call 811 before planting shrubs or trees, setting fence posts, installing sprinkler systems or digging where it might damage underground lines. 800670296



These days, we are seeing more remote-controlled devices, like drones and other aircraft, which can be a great way to have fun outdoors. But these gadgets also bring new safety concerns. Never fly them near power lines, substations or other electrical equipment.

## **Remember these safety tips when flying a drone:**

- ▶ Keep a safe distance from electrical equipment when you fly. If contact is accidentally made with a power line or a transformer inside a substation, many members of your community could be left without electricity.
- ▶ Keep the drone in your sight at all times.
- ▶ Avoid flying if weather conditions are unfavorable. High winds could cause you to lose control of the drone.

Your safety is important to us. We hope you will share the message of electrical safety so that you and others can enjoy plenty of summer days filled with fun!



## May Is Electrical Safety Month

**EVERY MAY, NATIONAL ELECTRICAL** Safety Month reminds us to sweep our homes of hazards that could lead to accidents and fires. **This year, resolve to:**

**Install ground-fault circuit interrupters.** These devices can protect your family from electrocution. In fact, the Consumer Product Safety Commission estimates that GFCIs could prevent half of all home electrocutions. Install them in any room that could get wet, including bathrooms, garages, kitchens and laundry rooms, and on outdoor receptacles and any outlet that's within 6 feet of a faucet.

**Prevent fires with arc-fault protection.** When electrical wiring or devices get damaged or overheated, an arc fault can occur. An arc fault is a discharge of electricity that turns into heat and can break down a wire's insulation. That can cause a fire. In fact, the National Fire Protection Association estimates that 47,000 home fires every year involve some sort of electrical malfunction, and half of those fires could be prevented by arc-fault circuit interrupters. 800841968

**Childproof your home.** Your 2- to 4-year-old child can remove plastic outlet caps within 10 seconds, according to research by Temple University. Foil your little one's attempts by installing tamper-resistant receptacles, which are designed with toddlers in mind. Every room of your house needs childproof outlets so your child can't insert anything into them, which would otherwise cause a shock.



# Rafael's Corn Cake

RAFAEL SERRANO | KELLER

2 cans corn, drained	1 teaspoon vanilla extract
3 eggs	1 teaspoon ground cinnamon
1 can condensed milk	½ cup grated or flaked coconut
½ cup (1 stick) butter	Pinch of salt
½ cup cream cheese	1 tablespoon honey
½ cup corn flour	1 tablespoon walnut wine
1 tablespoon baking powder	(optional)

**1.** Add the corn to a blender, then mix and liquefy with all remaining ingredients.

**2.** Pour mixture into a greased and floured 11-by-7-by-2-inch cake pan.

**3.** Bake at 360 degrees 1 hour and 15 minutes. Allow cake to cool before removing from pan. Enjoy!

**Cook's Tip** Can be served with cream of your choice. Ideal with a cup of coffee or hot chocolate. 800741910



## Tri-County EC Member Recipe Submission Form

NAME

CITY

EMAIL or PHONE NUMBER

RECIPE NAME

**Please return to:**

**Email:** Please include the above information with your recipe and send to [pr@tcectexas.com](mailto:pr@tcectexas.com).

**Mail:** Please detach and submit this form with your recipe and mail to:

Tri-County Electric Cooperative  
Attn: Recipe Submission  
600 NW Parkway  
Azle, TX 76020