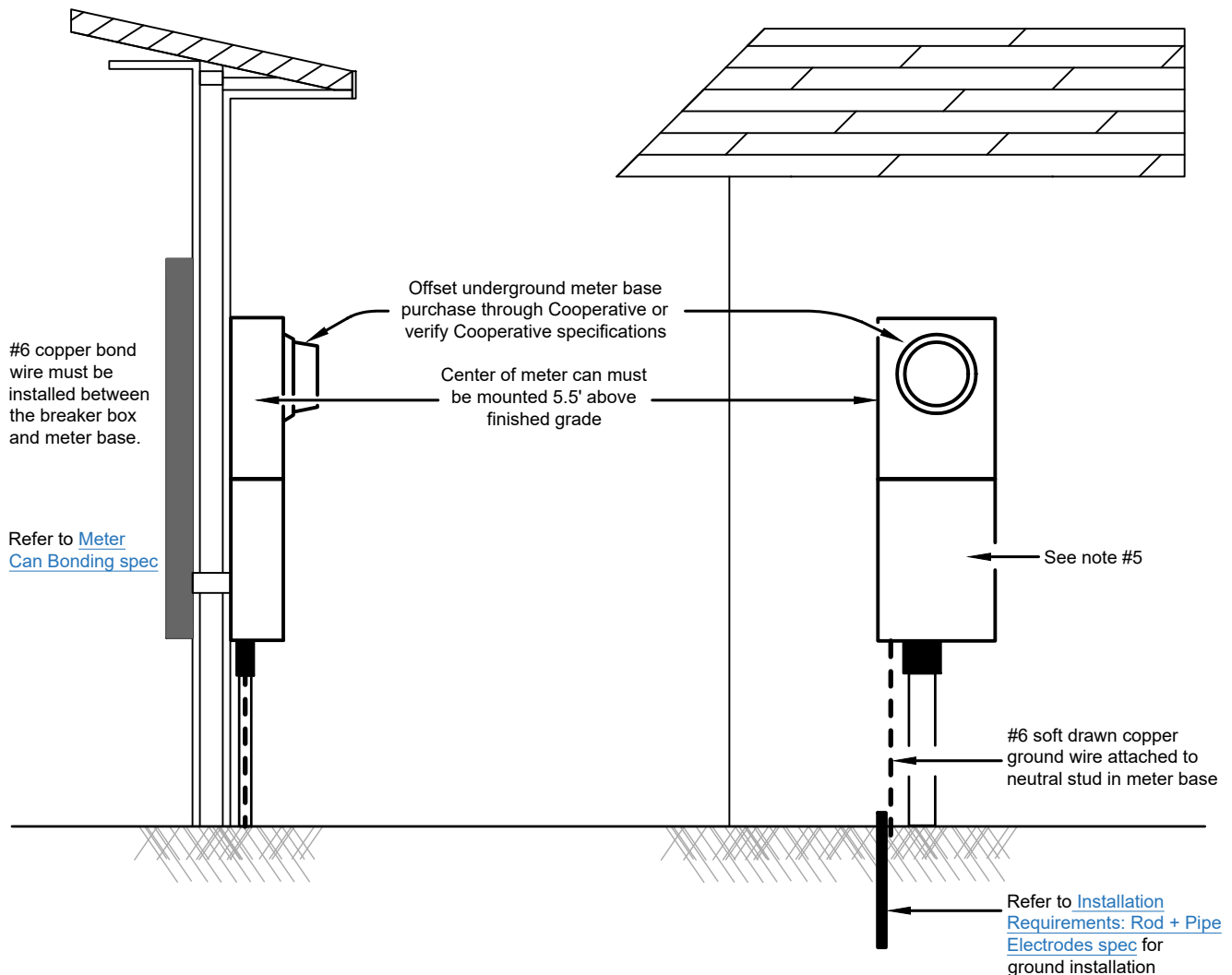


UNDERGROUND SERVICE ENTRANCE

Structures Only



Phone: 817.444.3201 ★ tcectexas.com



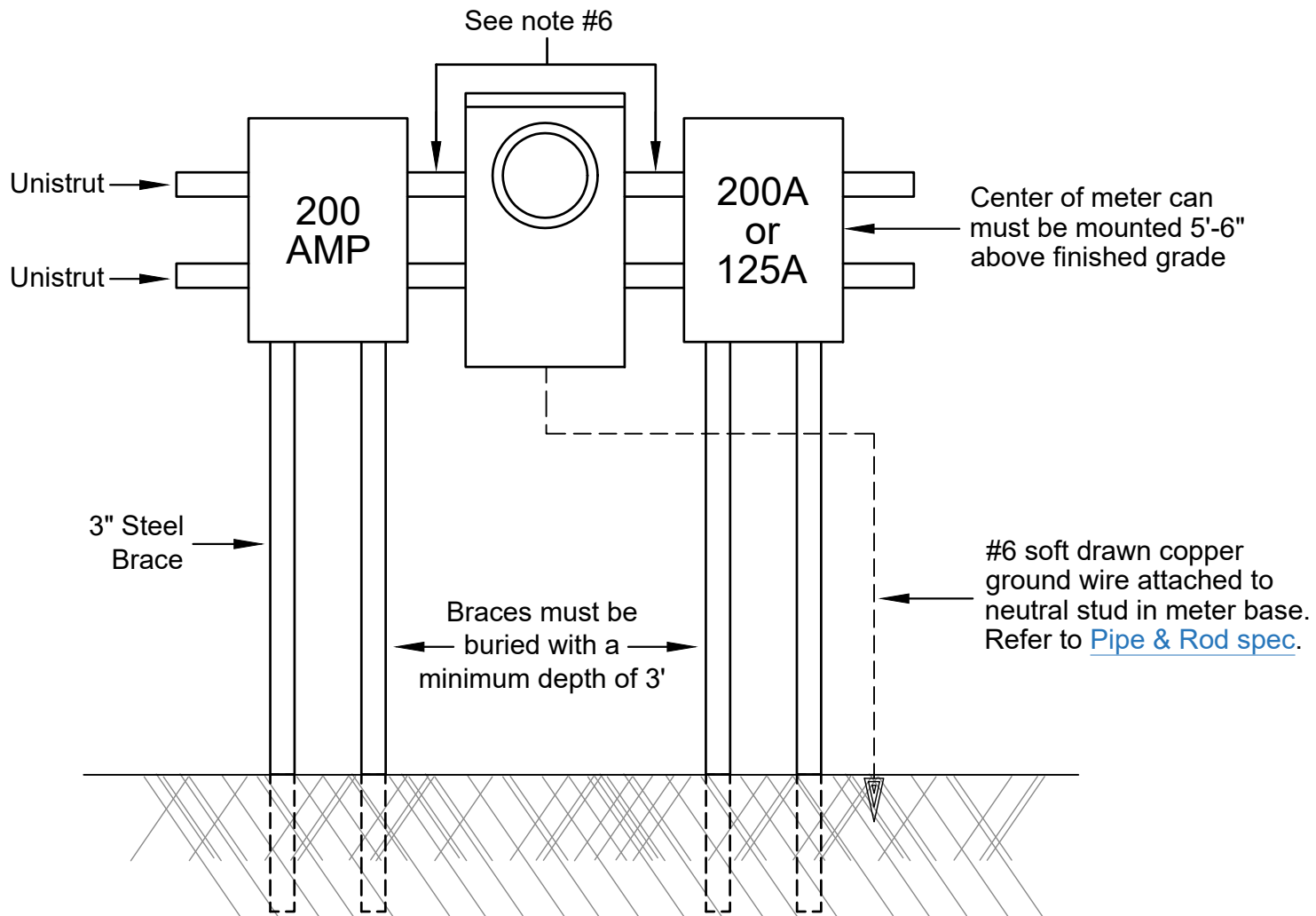
NOTES:

1. Meter sockets must conform to specifications furnished by Tri-County Electric Cooperative and mounted approximately 5.5' above finished grade.
2. Member installation must comply with National Electric Code and applicable city ordinance.
3. Proper copper wire size must be used in meter loop. Main disconnect cannot have rating larger than the meter base.
 - a. 100 Amp service: #2 copper or 2/0 aluminum on both line and neutral
 - b. 200 Amp service: 2/0 copper or 4/0 aluminum on both line and neutral
 - c. 320 Amp service: 350 MCM copper or 500 MCM aluminum on both line and neutral
4. New construction not receiving a meter 10 days after construction is complete, will be billed the minimum charge based on the applicable rate schedule.
5. Service Disconnect must be exterior and within 3' of meter.
6. Not available for non-permanent structures.
7. Pull out fuses are not acceptable as a service disconnect.



UNDERGROUND METER RACK

Phone: 817.444.3201 ★ tcectexas.com



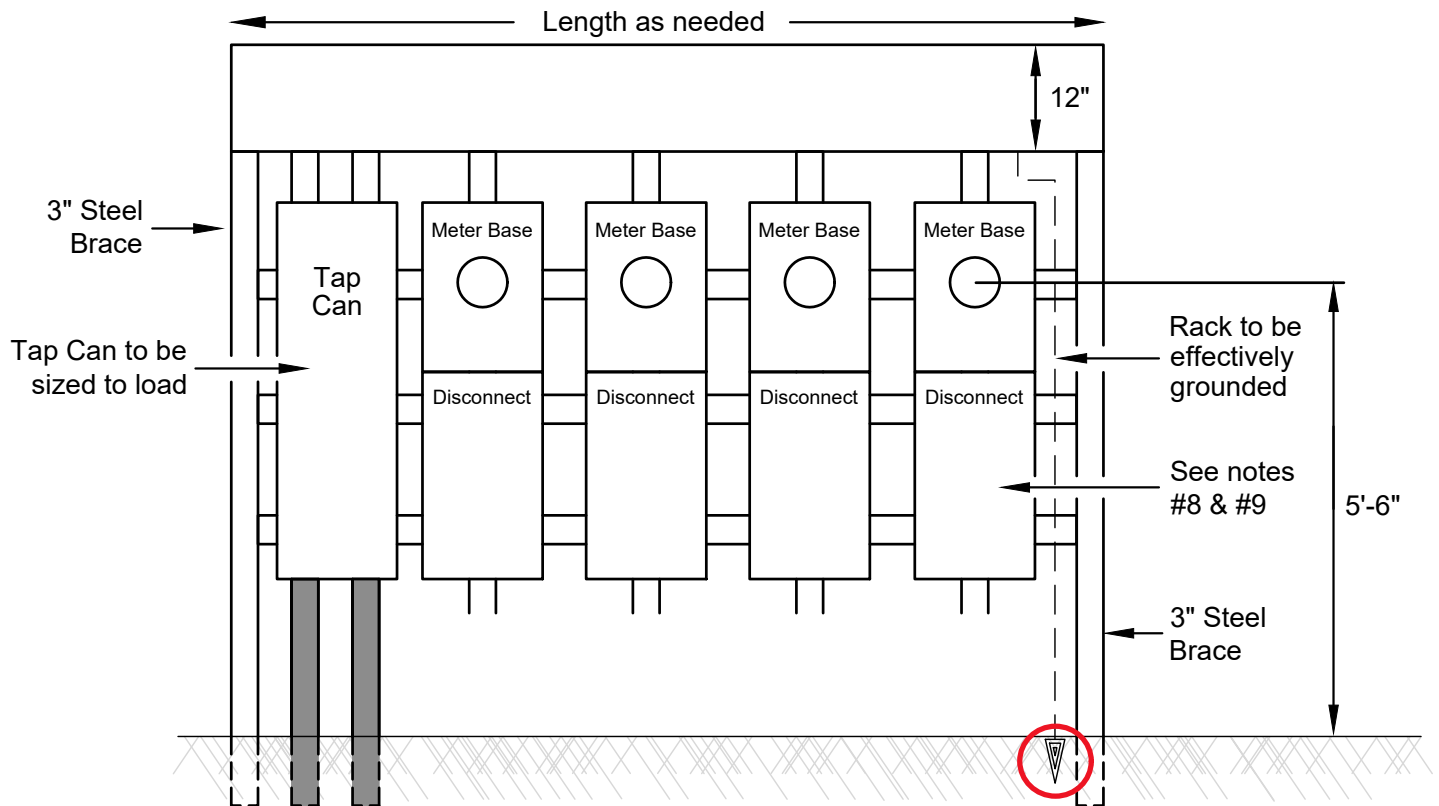
NOTES:

1. Meter sockets must conform to specifications furnished by Tri-County Electric Cooperative and mounted approximately 5'-6" above finished grade.
2. Member installation must comply with National Electric Code and applicable city ordinances.
3. Main disconnect cannot have a rating larger than the meter base.
4. New construction not receiving a meter 10 days after construction is complete will be billed the minimum charge based on the applicable rate schedule.
5. If a request is made to connect service and the meter loop fails to meet requirements, Tri-County Electric Cooperative will not connect service and will bill the account for applicable trip charge.
6. A #6 copper bond wire must be installed between both breaker boxes and meter base.
7. Service Disconnect must be exterior and within 3' of meter.
8. Troughs, nipples, and racks must be metal. PVC is not acceptable.



Trough-Fed Gang Meter Base

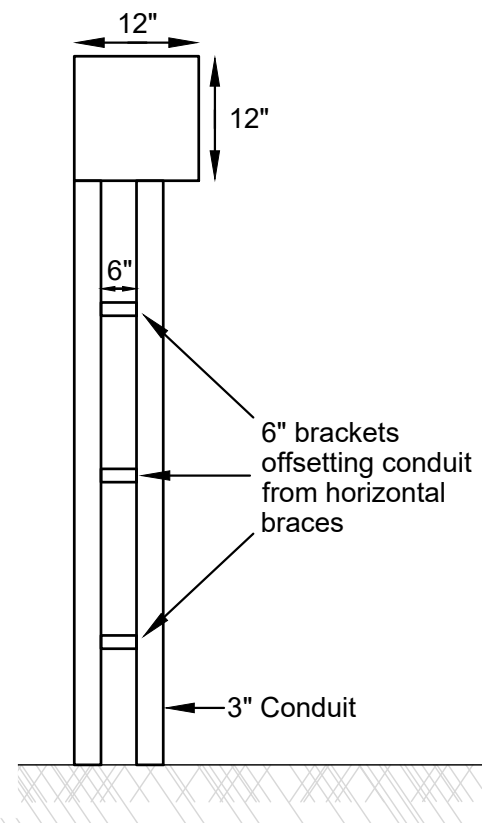
Phone: 817.444.3201 ★ tcctexas.com



Refer to [Installation Requirements for Rod and Pipe Electrodes](#)

NOTES:

1. Meter sockets must conform to specifications furnished by Tri-County Electric Cooperative and mounted approximately 5'-6" above finished grade.
2. Member installation must comply with National Electric Code and applicable city ordinances.
3. Proper copper wire size must be used in meter loop. Main disconnect cannot have rating larger than the meter base.
 - a. 200 Amp service: 2/0 copper or 4/0 aluminum on both line and neutral
4. New construction not receiving a meter 10 days after construction is complete will be billed the minimum charge based on the applicable rate schedule.
5. If a request is made to connect service and the meter loop fails to meet requirements, the Cooperative will not connect service and will bill the account for applicable trip charge.
6. Design may be extended to a maximum of seven sockets.
7. Raceway or tap can must be rated sufficiently for the connected load.
8. Tap can is the point of service and member owned. Ground to be installed in tap can. Terminations must be securely fastened inside tap can, floating multi-bars are not accepted.
9. Service Disconnect must be exterior and within 3' of meter.
10. Troughs, nipples, and racks must be metal. PVC is not acceptable.

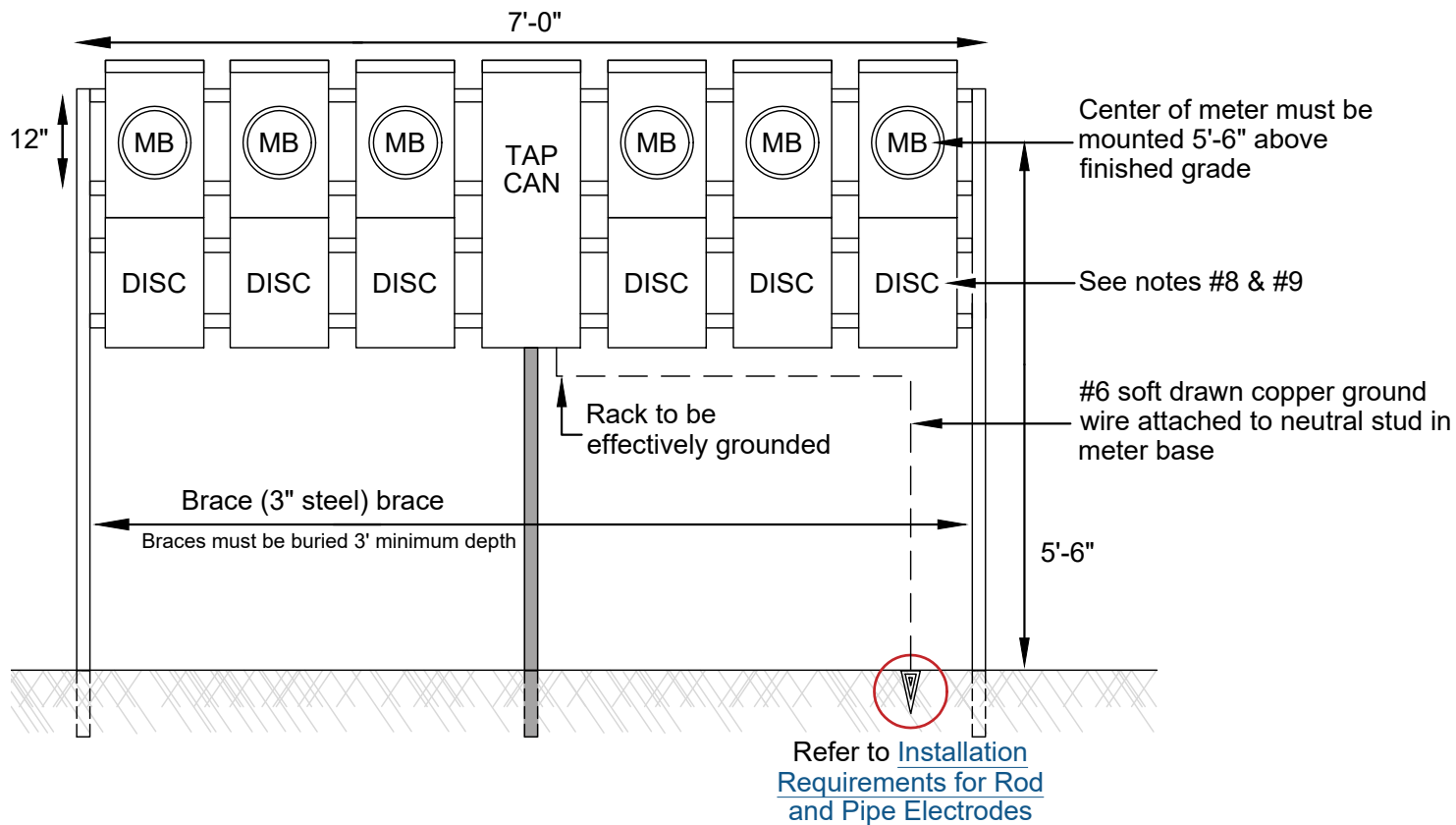




GANG METER BASE

Rack of 6

Phone: 817.444.3201 ★ tcectexas.com



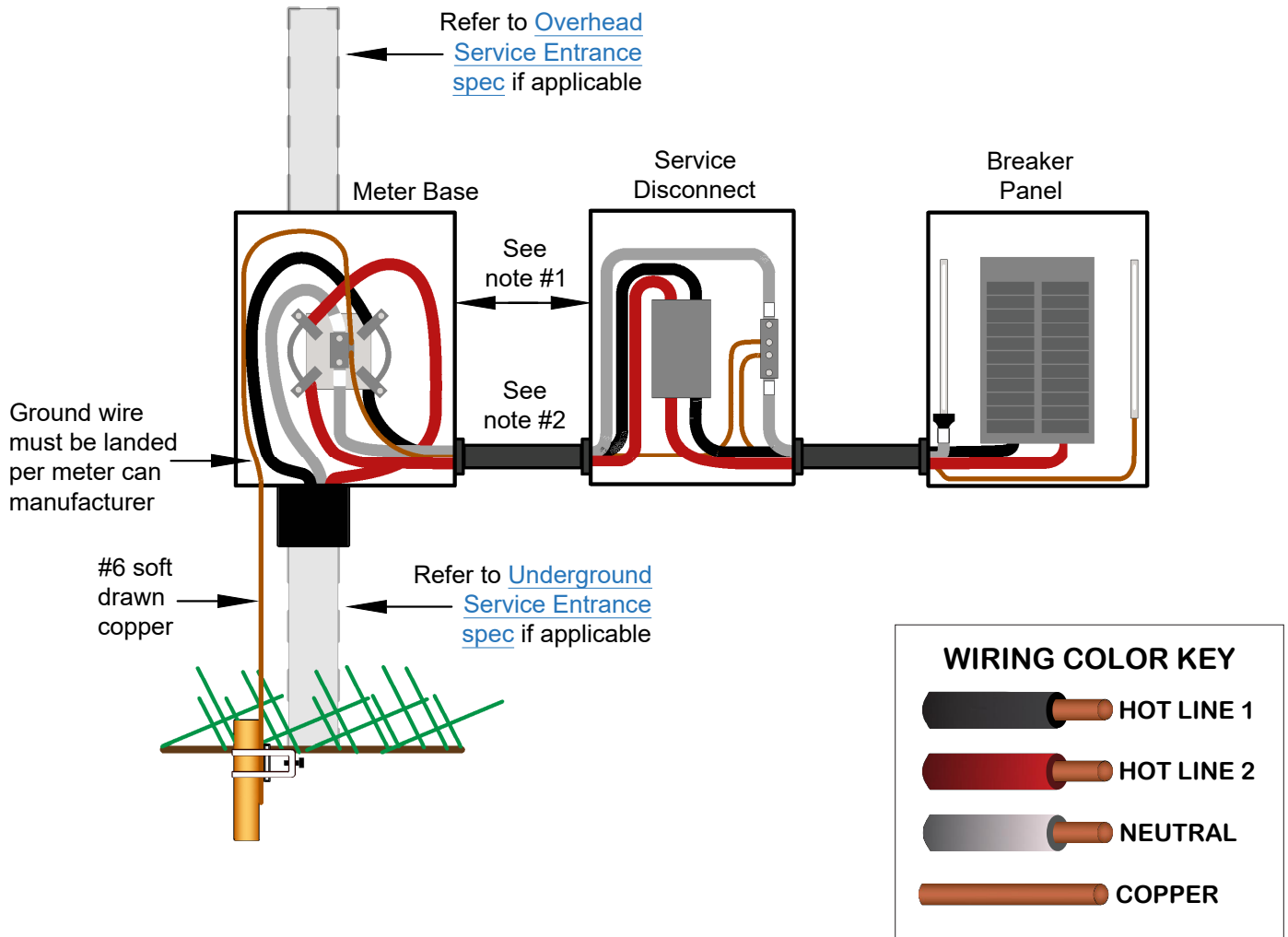
NOTES:

1. Meter sockets must conform to specifications furnished by Tri-County Electric Cooperative and mounted approximately 5'-6" above finished grade.
2. Member installation must comply with National Electric Code and applicable city ordinance.
3. Proper copper wire size must be used in meter loop. Main disconnect cannot have rating larger than the meter base.
 - a. 200 Amp service: 2/0 copper or 4/0 aluminum on both line and neutral
4. New construction not receiving a meter 10 days after construction is complete, will be billed the minimum charge based on the applicable rate schedule.
5. If a request is made to connect service and the meter loop fails to meet requirements, the Cooperative will not connect service and will bill the account for applicable trip charge.
6. Raceway or tap can must be rated sufficiently for the connected load.
7. Tap Can is the point of service and member owned. Ground to be installed in tap can. Terminations must be securely fastened inside tap can, floating multi-bars are not accepted.
8. Service Disconnect must be exterior and within 3' of meter.
9. Troughs, nipples, and racks must be metal. PVC is not acceptable.



METER CAN BONDING

Phone: 817.444.3201 ★ tcectexas.com



NOTES:

1. Service disconnect must be outside and within 3' of meter.
2. Conduit between the meter and service disconnect must be rigid metal conduit or EMT.
3. Refer to the [Installation Requirements: Rod + Pipe Electrodes spec](#) for ground rod installation guidelines.
4. Pull out fuses are not acceptable as a service disconnect.

Rod and Pipe Electrodes

Installation Requirements



Phone: 817.444.3201 ★ tcectexas.com

The electrode (rod) shall be installed such that at least 8 feet of length is in contact with the soil. It shall be driven to a depth of not less than 8 feet except, where rock bottom is encountered, the electrode shall be driven at an angle not to exceed 45 degrees. The electrode shall be permitted to be buried in a trench that is at least 24 inches deep (only if it cannot be installed vertically or at a 45° angle). The upper end of the electrode shall be flush with ground level and visible to TCEC.

